

Imię _____

Nazwisko _____

1. Jaka jest forma przeszła czasownika „buy”?

A. bought

B. buy

C. buyed

D. brought

2. Have a good weekend! Enjoy

A. myself

B. yourself

C. yourselves

D. themselves

3. I play ... guitar and my brother plays ... basketball.

A. a/the

B. the/a

C. the/-

D. -/a

4. I love my mum's food. ... food is the best.

A. home

B. homedone

C. homemake

D. homemade

5. Mary is my neighbour.

A. parents'

B. parents's

C. parentss'

D. parent

6. I don't like Tom. I don't like...

A. her

B. his

C. hers

D. him

7. We are going to the cinema...

A. last night

B. yesterday

C. tomorrow

D. every day

8. I am not the ... student in the class.

A. good

B. better

C. best

D. worst

9. Which of them are water means of transport?

A. a ship

B. a ferry

C. a tram

D. a plane

10. Did you the film last night?

A. enjoyed

B. like

C. enjoy

D. liked

11. Które rzeczownik są policzalne?

A. coffee

B. tea

C. cookie

D. burger

12. ... homework do you usually have?

A. How

B. How many

C. How much

D. Which

13. What do people eat in the morning?

A. lunch

B. dinner

C. supper

D. breakfast

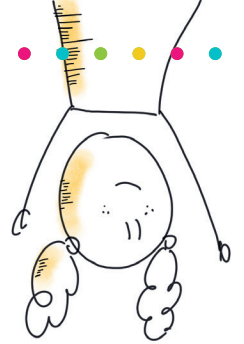
14. The person who looks after people in hospital is...

A. a mechanic

B. a nurse

C. a journalist

D. a teacher



15. Jakie jest przeciwieństwo przymiotnika "heavy"?

A. hard

B. short

C. easy

D. light

16. Które zdanie jest napisane w czasie Present Continuous?

A. Kate reads books.

B. Kate is reading a book.

C. Kate read a book.

D. Kate has read a book.

17. I think it tomorrow.

A. rains

B. is raining

C. will be rain

D. will rain

18. My friends football when it started to rain.

A. played

B. play

C. are playing

D. were playing



19. Max is 10 years old and I am 9. Max is than me.

A. old

B. older

C. the oldest

D. more old

20. Would you like ... to drink?

A. anything

B. everything

C. something

D. some

21. Który zestaw zawiera poprawnie zapisane czasowniki?

A. dos, meet, go

B. eating, goes, plays

C. cries, haveing, painted

D. does, eatting, buies

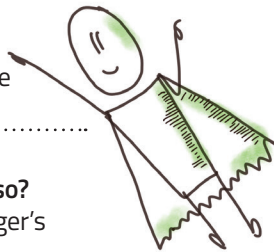
22. Który wyraz oznacza „pracodawca”?

A. employ

B. employee

C. employer

D. unemployed



23. Jak nazywa się sklep, w którym kupisz mięso?

A. butcher's

B. fishmonger's

C. newsagent's

D. greengrocer's

24. Które produkty zaliczymy do kategorii "fruit"?

A. a cucumber

B. a pepper

C. a pineapple

D. a pumpkin

25. Co znajduje się w sypialni?

A. a washbasin, a dishwasher

B. a wardrobe, a bed

C. a table, a sofa

D. a mirror, a shower

26. ... people always want to win.

A. Jealous

B. Sensible

C. Competitive

D. Sensitive

27. Która odpowiedź jest prawidłowa? Does he often visit his friends?

A. Yes, he do.

B. Yes, he did.

C. Yes, he does.

D. Yes, he is.

28. Który rzeczownik nie występuje w liczbie mnogiej?

A. sugar

B. carrot

C. suitcase

D. finger

29. Przeciwieństwo słowa „big” to...

A. tiny

B. large

C. huge

D. enormous

